



Be a light for other people, so that they will see God in the good things you do

## Friday Flyer – 6<sup>th</sup> March 2026

Spring 2 - Week 3	
Monday 9 <sup>th</sup> March	<ul style="list-style-type: none"> <li>• Breakfast Club from 8am</li> </ul>
Tuesday 10 <sup>th</sup> March	<ul style="list-style-type: none"> <li>• Breakfast Club from 8am</li> <li>• Spanish Club – Afterschool until 4pm</li> </ul>
Wednesday 11 <sup>th</sup> March	<ul style="list-style-type: none"> <li>• Breakfast Club from 8am</li> <li>• PE -Wombats</li> <li>• Sunflower Dance Class – Afterschool until 4.15pm</li> </ul>
Thursday 12 <sup>th</sup> March	<ul style="list-style-type: none"> <li>• Breakfast Club from 8am</li> <li>• PE – Koalas - TBC</li> <li>• PE – Wombats – TBC</li> <li>• Super Striker Soccer Club to 4.15pm - TBC</li> </ul>
Friday 13 <sup>th</sup> March	<ul style="list-style-type: none"> <li>• Breakfast Club from 8am</li> <li>• PE – Koalas</li> </ul>
Spring 2 - Week 4	
Monday 16 <sup>th</sup> March	<ul style="list-style-type: none"> <li>• Breakfast Club from 8am</li> </ul>
Tuesday 17 <sup>th</sup> March	<ul style="list-style-type: none"> <li>• Breakfast Club from 8am</li> <li>• Spanish Club – Afterschool until 4pm</li> </ul>
Wednesday 18 <sup>th</sup> March	<ul style="list-style-type: none"> <li>• Breakfast Club from 8am</li> <li>• PE -Wombats</li> <li>• Sunflower Dance Class – Afterschool until 4.15pm</li> </ul>
Thursday 19 <sup>th</sup> March	<ul style="list-style-type: none"> <li>• Breakfast Club from 8am</li> <li>• KS1 trip to Crich Tramway Museum</li> <li>• PE – Wombats</li> <li>• Super Striker Soccer Club to 4.15pm - TBC</li> </ul>
Friday 20 <sup>th</sup> March	<ul style="list-style-type: none"> <li>• Breakfast Club from 8am</li> <li>• PE – Koalas – TBC</li> <li>• Easter Family Celebration – from 2.15pm – Parents/Carers welcome</li> </ul>

Also, in this update:

- INSET Days – 2026/2027
- Solihull Parenting Course starting April 17<sup>th</sup> at All Saints, Matlock
- School Easter Family Celebration

DATES FOR YOUR DIARY	
19/03/26	KOALAS – trip to Crich Tramway Museum – details to follow.
20/03/26	Family Easter Celebration Afternoon – All welcome
20/03/26	Visit to Medway centre Lunch club - crafts
25/03/26	KS1 Sports – Fun Run at All Saints Juniors
27/03/26	Spring 2 ends – last day
w/c 30/03/26 & w/c 6/04/26	Easter Holidays
13/04/26	Summer 1 starts – first day back
23/04/26	EYFS – Bluebell Dairy Trip – TBC – details to follow.
04/05/26	May Day Bank Holiday – school closed
20/05/26	KS1 Sports – Multi-skills at St Giles, Matlock
22/05/26	Summer 1 ends – last day
w/c 25/05/26	Half Term
01/06/26	INSET day – school closed
02/06/26 TUESDAY	Summer 2 starts – first day back
08/07/26	KS1 – Sports Day at St Giles, Matlock
23/07/26	Last day of School year!

### Term dates for the 2026 – 2027 academic year

Autumn 1: 4<sup>th</sup> September 2025 to 23<sup>rd</sup> October 2025 (36 days)  
 Autumn 2: 2<sup>nd</sup> November 2025 to 18<sup>th</sup> December 2025 (35 days)

Spring 1: 4<sup>th</sup> January 2026 to 12<sup>th</sup> February 2026 (30 days)  
 Spring 2: 22<sup>nd</sup> February 2026 to 25<sup>th</sup> March 2026 (24 days)

Summer 1: 12<sup>th</sup> April 2026 to 28<sup>th</sup> May 2026 (34 days)  
 Summer 2: 7<sup>th</sup> June 2026 to 26<sup>th</sup> July 2026 (36 days)

### INSET Days – School Closed

Inset 1: Friday 4<sup>th</sup> September 2026  
 Inset 2: February 2027 – Still to be confirmed  
 Inset 3: Thursday 27<sup>th</sup> May 2027  
 Inset 4: Friday 28<sup>th</sup> May 2027  
 Inset 5: Monday 26<sup>th</sup> July 2027

## Adverse Weather Procedures

With colder weather and wintry conditions expected in the coming weeks, we would like to remind you of our arrangements for icy or snowy weather:

- We aim to keep Bakewell CofE Infants open whenever possible, provided we have enough staff to operate safely.
- Our site team will grit certain routes daily, but please take extra care when accessing school sites. Use the safest entry and exit routes.
- Contact the school office if you need assistance, or if school is open but you are unable to get here.
- Due to Bakewell's hilly terrain and limited parking, we recommend travelling on foot where possible.

If a closure is necessary, we will notify you via:

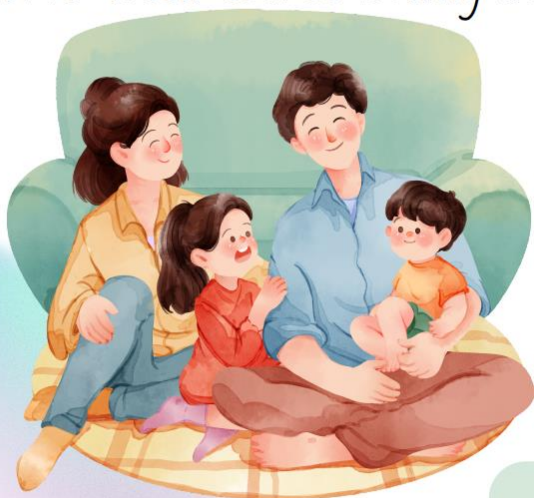
- Arbor message
- Our school website
- Our Facebook page



Thank you for your understanding and cooperation.

## Join us for our Solihull Parenting Course

A 10 week course looking at child development and behaviour.



- Understand your child's behaviour and how they communicate.
- Recognise how your child is feeling.
- Reduce the difficulties you face in everyday life.
- Improve how you communicate with your child.
- Understand the importance of play.
- Develop good routines and boundaries.
- Improve relationships between you and child for a happier and calmer home.

Next course starts Friday 17<sup>th</sup> April  
9.30-11.30 @ All Saints Infant School

Open to all parents across the partnership. Please email [earlyhelp@matlockanddales.derbyshire.sch.uk](mailto:earlyhelp@matlockanddales.derbyshire.sch.uk) to reserve a place.

# SOLIHULL PARENTING COURSE

## PARENT FEEDBACK

### Friendly and supportive

→ The group on the Solihull Parenting including those running the course are all honest, open minded and trusted to keep our discussions confidential. It's helped me realise that like all parents: we are all going through difficult times, there is help, there are ways to handle things better, and we are doing our best. It's provided learning, self-reflection and a chance to really off load too and feel supported.

From the very first day I was hooked, it's interesting, insightful and really makes you think about why the children could be acting in a particular way. Everyone is so friendly and easy to talk to.



### no-judgement

→ I felt the freedom to say what I want without the judgement. I find it very helpful and informative after every session and my expectations for my kids are more normal now.

### confidence building

The course improved my confidence as a parent and I would recommend it as an investment in your family.



### Enjoyable

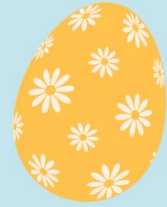
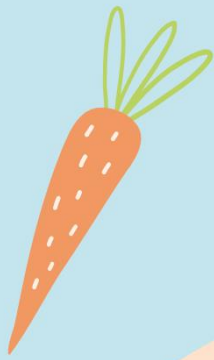
→ For anyone who wants to help engage their children in a more positive way, I would (and indeed have) recommend this group. - "Thank you!"

### Peer Support

Those Tuesday morning two-hour (often turning into nearly three-hour!) sessions - which I still miss - offered safe sanctuary to unlock barriers to having the courage to publicly express worries and concerns about our own parenting styles and about our children's behaviours, emotions and education which, under Mrs Lloyd and Mrs Southall's quietly guiding hand, were always put in perspective and soothed.

All this together with a good dollop of peer support, often a few tears, calming cups of tea and a comforting biscuit





Bakewell C of E Infant School

# EASTER FAMILY CELEBRATION



Friday 20<sup>th</sup> March

2.15-4pm

Come and join the PTFA for a  
fun-filled afternoon!



There will be lots of Easter crafts,  
and games, as well as an Easter  
egg hunt for children and grown-  
ups to enjoy together.

Refreshments will be available  
to buy



MORE INFORMATION:  
CONTACT THE SCHOOL OFFICE  
OR EMAIL THE PTFA AT  
[BAKEWELLINFANT.PTFA@GMAIL.COM](mailto:BAKEWELLINFANT.PTFA@GMAIL.COM)